

BUILT-IN HOUSEHOLD APPLIANCES 2022 - 2023  
REFRIGERATORS



[WWW.VESTELINTERNATIONAL.COM](http://WWW.VESTELINTERNATIONAL.COM)

**VESTEL**









## **COMPANY PROFILE**

2-3

## **GLOBAL OPERATIONS**

4-5

## **FEATURES**

6-9

## **LINE-UP**

10-26

## **SPECIFICATIONS**

27-30

## **INSTALLATIONS**

31

## **ADDRESSES**

33



## COMPANY PROFILE

VESTEL CITY, WHICH COMPRISES NINE PLANTS LOCATED IN MANISA, IS AMONGST THE BIGGEST INDUSTRIAL COMPLEXES OF THE WORLD.

>





**18.500**  
Employees

**1.163.000 M<sup>2</sup>**  
Closed Production Area

Export Leader of Turkey with  
**\$ 2,5 BILLION**

**\$ 3,2 BILLION**  
Turnover

Vestel City, which comprises nine plants located in Manisa, is amongst the biggest industrial complexes of the world.

Comprised of 24 companies, Vestel Group is a multi-industry manufacturer that operates in consumer electronics, major domestic appliances, professional displays, automotive and battery solutions, and EV Chargers. Testimony to the global importance of Zorlu Holding across multiple technology sectors, Vestel is not only thriving at home in Turkey, but also through a further 14 subsidiaries that have been set up in various other parts of the world. Thanks to its renowned manufacturing and R&D complex, Vestel exports to 158 countries and keeps its position as a global player.

Vestel is one of the ten biggest major domestic appliances manufacturers in Europe, with its new product development ability, flexibility in production, and fast response to clients' demands.

Operating with an annual capacity of 4.4 million units, the company's two refrigerator plants produce a variety of models ranging from french door, no-frost, combi, double door, single door, to table top fridges and freezers, as well as built-in models.

Achieving similar success with washing machines, Vestel is able to produce 3.8 million units a year, with large models range from 4 kg to 12 kg drum capacities washer and 7kg/5kg, 8kg/6kg, 9kg/6kg, 10kg/6kg drum capacities washer/dryer. Vestel's product range also includes built-in washer and washer/dryer with the drum capacities of 7 kg, 8 kg and 7/5 kg.

Vestel tumble dryers are produced 1.2 million units a year, with models ranging from 7 kg to 12 kg capacities. The group is capable of producing both condenser and heat pump type of tumble dryers with high efficiency.

The plant for cooking appliances operates with an annual capacity of 2.7 million units, producing free standing cookers, built-in hobs and ovens.

The major domestic appliances product range includes free standing, semi and fully integrated dishwashers. The 86 cm high tall tub and deep tall tub dishwasher developed for the US market have started to be produced for the first time. The plant has the capacity to produce 2.5 million units a year for now. New dishwasher factory is under construction and capacity will reach 4 million unit per year over time.

In addition, the air conditioner factory is capable of producing 420,000 sets of split-type models.

R&D facilities located in Turkey, the UK, and China employ the highest caliber engineers to develop hardware and software solutions that provide clients with world-class quality products.

VestelKöm factory located in free trade zone of Izmir, has a special R&D team for manufacturing and testing batteries and EV Chargers, which is also exporting these goods to Europe with zero customs tax.

Vestel has proven its success in product design by receiving the most prestigious design awards every year from well-known industrial design organizations for a variety of products.

Vestel Trade, the company responsible for the marketing and sales of Vestel products overseas, exports 75% percent of its production under leading Japanese and European brands to 158 countries.

Vestel appeals to different consumer tastes in 158 countries with its wide range of products, which reflects its competencies in technological development, design and product customization. Accounting for 90% of Turkey's TV exports and 35% of the nation's white goods exports, Vestel has been an unwavering export leader in the Turkish electronics sector for the past 24 years.

For a sustainable future and transition to an economy based on net zero emissions, Vestel triggers transformation across the entire value chain. Leveraging the power of Industry 4.0 and automation to support the reduction of energy consumption through operational improvements and innovative products, Vestel implements circular models to improve resource efficiency in production and reduce our environmental impact from products.

Vestel aims to reach net zero emissions by 2050, first in its own operations and then in its entire value chain. Vestel is working on decarbonization plan as part of its commitment to set Science Based Targets (SBTi).

More information: [www.vestelinternational.com](http://www.vestelinternational.com)





## GLOBAL OPERATIONS

MANUFACTURING & ASSEMBLY PLANTS

>



## **TV, SET-TOP BOXES**

Manisa, Turkey - Kobierzyce, Poland

## **PROFESSIONAL DISPLAYS, TABLET PC, LED LIGHTING**

Manisa Turkey

## **REFRIGERATOR, WASHING MACHINE, DISHWASHER, TUMBLE DRYER, COOKING APPLIANCES, AIR CONDITIONER, WATER HEATER**

Manisa, Turkey

### **R&D CENTERS**

Manisa, Turkey

Istanbul, Turkey

Bristol, United Kingdom

Shanghai, China

### **MARKETING & SALES COMPANIES**

Vestel Trade, Turkey

Vestel France, France

Vestel Germany, Germany

Vestel UK, United Kingdom

Vestel Iberia, Spain

Vestel Poland, Poland

Vestel Holland, Netherlands

Vestel CIS Ltd, Russia

Vestel Electronica, Romania

Vestel Central Asia, Kazakhstan

Vestel Electronics Gulf, Dubai

Vestel USA, USA

Vestel Vietnam, Vietnam

Vestel China, China

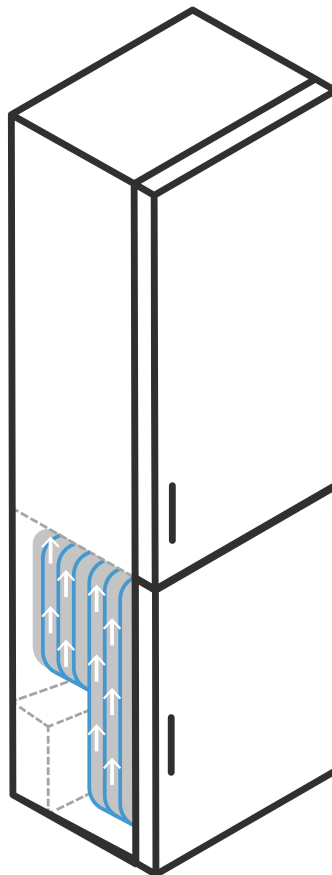


## Features





## COOLING TECHNOLOGIES



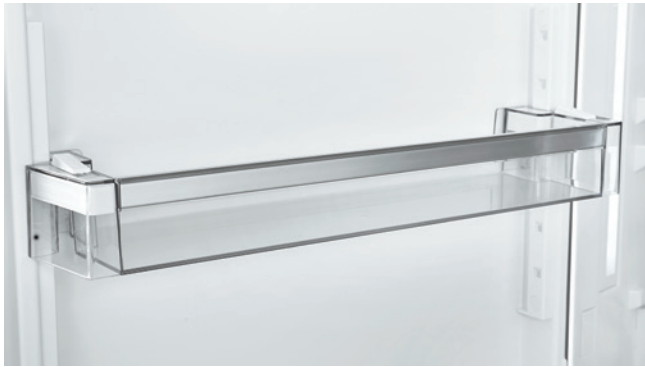
### **Less Frost**

Thanks to the wrap around evaporator, LessFrost technology offers more efficient cooling, less Manual defrost requirement, and more flexible storage room.





## FRESHNESS TECHNOLOGIES



### **V-Lift**

With the adjustable height mechanism, height of bottle shelf can be maximized for higher bottles or can be reduced to save space for the dairy shelf. Position of rack can be set to **6** different height.



### **Ice Slide**

Provides convenient storage spaces with a simple movement. The slide icemaker ensures flexible storage and max capacity anytime you need.



### **Sliding Tray**

Thanks to the sliding mechanism, it provides ease of use in the freezer compartment.



### **Door Reversible**

Depending on the location of your refrigerator, you can adjust door opening direction thanks to the reversible door feature.



### **Easy Lock Freezer**

Mechanism of the handle enables easy opening and closing of the door. Red mark on the door indicates and warns the user when the Freezer door is left open.





## Humidity Controlled Crisper

Thanks to air channels and special filter, humidity level can be adjusted precisely to keep your fruits and vegetables fresh and crisp.



## Door On Door Models

Cabinet door is mounted directly onto the refrigerator door and with the help of the hinge, the refrigerator opens wider and closes Automatically.



**LED Touch HP Display**



## Maxi-fresh Preserver

Maxi Fresh Preserver technology helps keeping food fresh longer time by absorbing ethylene gas (a volatile organic compound released naturally from fresh foods) and unpleasant odors from the crisper.



## Sliding Door Models

Cabinet door is Connected to the refrigerator door with sliding rails.



**Push Button HP Display**



2 7 9 5

## Technical Data

### Net Volume

294 lt

### Product Dimensions HxWxD mm

1770 x 540 x 545

## Built In – Single Door

Sliding door

Door on Door

Reversible doors

**F E**



## Standard Configuration

Push Button HP Display  
Turbo Fan Air Cooling  
Air Duct  
Safety Glass Shelves  
Crispers  
Humidity Controller  
Dairy Rack  
Egg Holder  
Bottle Rack

## Optional Features

LED Touch HP Display  
LED Lighting (Top / Sides)  
Wine Shelf  
Portable Wine Holder  
V-Lift  
MaxiFresh Preserver  
Hotstamp on the Glass Shelves  
Hotstamp Add-on on the Door Racks  
Hinge Cover (Sliding Door)



2 7 9 1

### ***Technical Data***

#### **Net Volume**

197 lt

#### **Product Dimensions HxWxD mm**

1770 x 540 x 545

### ***Built In – Single Door***

Sliding door

Door on Door

Reversible doors

**F E**



### ***Standard Configuration***

Push Button HP Display

Nofrost

6 Freezer Baskets

2 Flaps

LED Lighting

### ***Optional Features***

LED Touch HP Display

Twisted Icematic

Hotstamp on Accessories

Hinge Cover (Sliding Door)



2 7 6 1

### Technical Data

**Net Volume**

243 lt

**Net Fridge/Freezer Volume**

180 lt / 63 lt

**Product Dimensions HxWxD mm**

1770 x 540 x 545

### Built In – Double Door

Sliding door

Door on Door

Reversible doors

**F E**



### Standard Configuration

Frost Free  
Turbo fan air cooling  
Ice Box  
Safety Glass Shelves  
Crisper  
Auto Defrosting  
Humidity Controller  
LED Lighting  
Dairy Rack  
Egg Holder  
Bottle Rack

### Optional Features

LED Lighting (Top / Sides)  
Wine Shelf  
Portable Wine Holder  
V-Lift  
MaxiFresh Preserver  
Sliding Tray  
Hotstamp on the Glass Shelves  
Hotstamp Add-on on the Door Racks  
LED Touch HP Display  
Push Button HP Display  
Hinge Cover (Sliding Door)



2 7 6 4

### **Technical Data**

**Net Volume**

251 lt

**Net Fridge/Freezer Volume**

181 lt / 70 lt

**Product Dimensions HxWxD mm**

1770 x 540 x 545

### **Built In – Double Door**

Sliding door

Door on Door

Reversible doors

**F E**



### **Standard Configuration**

Mechanical Control  
Fridge LED Bulb Lighting  
Adjustable Tempered Glass Shelves  
Sliding Tray  
Humidity Control  
Egg Holders  
Zero Clearance  
Sliding Hinges  
Bottle Rack

### **Optional Features**

Door On Door Hinges  
Wine Rack  
Portable Wine Holder  
Maxifresh Preserver  
V-lift  
Hotstamp on the Glass Shelves  
Hotstamp add-on on the Door Racks  
Hotstamp add-on on the Drawers  
Hinge Cover (Sliding Door)



2 7 5 1

### Technical Data

**Net Volume**

230 lt

**Net Fridge/Freezer Volume**

145 lt / 85 lt

**Product Dimensions HxWxD mm**

1770 x 540 x 545

### Built In – Double Door

Sliding door

Door on Door

Reversible doors

**F E**



### Standard Configuration

Frost Free  
Turbo fan air cooling  
Ice Box  
Safety Glass Shelves  
Crisper  
Auto Defrosting  
Humidity Controller  
LED Lighting  
Dairy Rack  
Egg Holder  
Bottle Rack

### Optional Features

Electronic Head Panel Display  
Wine Shelf  
Portable Wine Holder  
V-Lift  
MaxiFresh Preserver  
Sliding Tray  
Hotstamp on the Glass Shelves  
Hotstamp Add-on on the Door Racks  
LED Touch HP Display  
Push Button HP Display  
Hinge Cover (Sliding Door)

2 7 5 4

## Technical Data

### Net Volume

244 lt

### Net Fridge/Freezer Volume

148 lt / 96 lt

### Product Dimensions HxWxD mm

1770 x 540 x 545

## Built In – Double Door

Sliding door

Door on Door

Reversible doors

**F E**



## Standard Configuration

Mechanical Control  
Fridge LED Bulb Lighting  
Adjustable Tempered Glass Shelves  
Sliding Tray  
Humidity Control  
Egg Holders  
Zero Clearance  
Sliding Hinges  
Bottle Rack

## Optional Features

Door On Door Hinges  
Wine Rack  
Portable Wine Holder  
Maxifresh Preserver  
V-lift  
Hotstamp on the Glass Shelves  
Hotstamp add-on on the Door Racks  
Hotstamp add-on on the Drawers  
Hinge Cover (Sliding Door)



2 6 3 0

### **Technical Data**

**Net Volume**

210 lt

**Net Fridge/Freezer Volume**

172 lt / 38 lt

**Product Dimensions HxWxD mm**

1445 x 540 x 545

### **Built In – Double Door**

Sliding door

Door on Door

Reversible doors

**F E**



### **Standard Configuration**

Less Frost  
Fridge LED Bulb Lighting  
Adjustable Tempered Glass Shelves  
Ice Tray  
Egg Holders  
Transparent Accessories  
Zero Clearance  
Reversible Doors  
Leveling Feet  
Bottle Rack

### **Optional Features**

Wine Shelf (chrome or plastic)  
Hotstamp Add-on on the Door Racks  
V-Lift  
Maxi Fresh Preserver  
Hinge Cover (Sliding Door)

2 3 0 0

### **Technical Data**

**Net Volume**

272 lt

**Net Fridge/Freezer Volume**

134 lt / 38 lt

**Product Dimensions HxWxD mm**

1218 x 540 x 545

### **Built In – Double Door**

Sliding Door

Reversible doors

**F E**



### **Standard Configuration**

Mechanical Control  
Fridge AC LED Lighting  
Tempered Glass Shelves  
Door Racks  
Bottle Rack  
Egg Holder

### **Optional Features**

Hotstamp on the Glass Shelves  
Hotstamp Add-on on the Door  
Wine Shelf  
Portable Wine Holder  
V-Lift



2 4 6 0

### **Technical Data**

#### **Net Volume**

211 lt

#### **Net Fridge/Freezer Volume**

154 lt / 57 lt

#### **Product Dimensions HxWxD mm**

1440 x 540 x 545

### **Built In – Double Door**

Sliding Door

Reversible doors

**F E**



### **Standard Configuration**

Less Frost  
Mechanical Control  
Led Bulb Lighting  
Crisper  
Tempered Glass Shelves  
Door Racks  
Bottle Rack  
Egg Holder  
Humidity Controller

### **Optional Features**

Single Control Inner Display  
Led Lighting On Top  
Wine Shelf  
Portable Wine Holder  
Maxifresh Preserver  
V-Lift  
Hotstamp on the Glass Shelves  
Hotstamp Add-on on the Door Racks

2 5 0 7

### Technical Data

#### Net Volume

193 lt

#### Product Dimensions HxWxD mm

1225 x 540 x 545

### Standard Configuration

Inner Electronic Control  
Removable Shelves  
Safety Glass Shelves  
Crisper  
Egg Holder  
Bottle Rack

E D

### Built In – Single Door

Sliding Door  
Door on Door  
Reversible Doors

### Optional Features

LED Touch HP Display  
Push Button HP Display  
LED Lighting (Right Side)  
Humidity Controller  
MaxiFresh Preserver  
V-Lift  
Wine Shelf  
Portable Wine Holder  
Hotstamp Add-on on the Door Racks  
Hinge Cover (Sliding Door)



2 5 0 0

### Technical Data

#### Net Volume

200 lt

#### Product Dimensions HxWxD mm

1225 x 540 x 545

### Standard Configuration

Removable Shelves  
Safety Glass Shelves  
Crisper  
Dairy Rack  
Egg Holder  
Bottle Rack

F E

### Built In – Single Door

Sliding Door  
Door on Door  
Reversible doors

### Optional Features

Hotstamp Add-on on the Door Racks  
Wine Shelf  
Portable Wine Holder  
Hinge Cover (Sliding Door)





2 4 0 7

### Technical Data

#### Net Volume

178 lt

#### Net Fridge / Freezer Volume

162 lt / 16 lt

#### Product Dimensions HxWxD mm

1225 x 540 x 545

### Standard Configuration

Inner Electronic Control  
4 Star Freezer Compartment  
Freezer Door Indicator  
Ice Box  
Removable Shelves  
Safety Glass Shelves  
Crispers  
Egg Holder  
Bottle Rack

### Built In – Single Door

Sliding Door  
Door on Door  
Reversible Doors

### Optional Features

LED Touch HP Display  
Push Button HP Display  
LED Lighting (Right Side)  
Humidity Controller  
MaxiFresh Preserver  
V-Lift  
Wine Shelf  
Portable Wine Holder  
Hotstamp Add-on on the Door  
Racks  
Hinge Cover (Sliding Door)



E D

2 4 0 0

### Technical Data

#### Net Volume

187 lt

#### Net Fridge / Freezer Volume

170 lt / 17 lt

#### Product Dimensions HxWxD mm

1225 x 540 x 545

### Standard Configuration

4 Star Freezer Compartment  
Freezer Door Indicator  
Ice Box  
Removable Shelves  
Safety Glass Shelves  
Crisper  
Dairy Rack

### Built In – Double Door

Sliding door  
Door on Door  
Reversible doors

### Optional Features

Hotstamp Add-on on the Door  
Racks  
Wine Shelf  
Portable Wine Holder  
Hinge Cover (Sliding Door)



F E

1 9 0 7

### Technical Data

#### Net Volume

154 lt

#### Product Dimensions HxWxD mm

1020 x 540 x 545

### Standard Configuration

Inner Electronic Control  
Removable Shelves  
Safety Glass Shelves  
Crisper  
Egg Holder  
Bottle Rack

### Built In – Single Door

Sliding Door

Door on Door

Reversible doors

### Optional Features

LED Touch HP Display  
Push Button HP Display  
LED Lighting (Right Side)  
Humidity Controller  
MaxiFresh Preserver  
V-Lift  
Wine Shelf  
Portable Wine Holder  
Hotstamp Add-on on the Door  
Racks  
Hinge Cover (Sliding Door)



E D

1 9 0 0

### Technical Data

#### Net Volume

160 lt

#### Product Dimensions HxWxD mm

1020 x 540 x 545

### Standard Configuration

Removable Shelves  
Safety Glass Shelves  
Crisper  
Dairy Rack  
Egg Holder  
Bottle Rack

### Built In – Single Door

Sliding Door

Door on Door

Reversible doors

### Optional Features

Hotstamp Add-on on the Door  
Racks  
Wine Shelf  
Portable Wine Holder  
Hinge Cover (Sliding Door)



F E



1 8 0 7

### Technical Data

#### Net Volume

139 lt

#### Net Fridge / Freezer Volume

123 lt / 16 lt

#### Product Dimensions HxWxD mm

1020 x 540 x 545

### Standard Configuration

Inner Electronic Control  
4 Star Freezer Compartment  
Freezer Door Indicator  
Ice Box  
Removable Shelves  
Safety Glass Shelves  
Crispers  
Egg Holder  
Bottle Rack

### Built In – Double Door

Sliding door  
Door on Door  
Reversible doors

### Optional Features

LED Touch HP Display  
Push Button HP Display  
LED Lighting (Right Side)  
Humidity Controller  
MaxiFresh Preserver  
V-Lift  
Wine Shelf  
Portable Wine Holder  
Hotstamp Add-on on the Door Racks  
Hinge Cover (Sliding Door)



E D

1 8 0 0

### Technical Data

#### Net Volume

147 lt

#### Net Fridge / Freezer Volume

130 lt / 17 lt

#### Product Dimensions HxWxD mm

1020 x 540 x 545

### Standard Configuration

4 Star Freezer Compartment  
Freezer Door Indicator  
Ice Box  
Removable Shelves  
Safety Glass Shelves  
Crisper  
Dairy Rack

### Built In – Double Door

Sliding door  
Door on Door  
Reversible doors

### Optional Features

Hotstamp Add-on on the Door Racks  
Wine Shelf  
Portable Wine Holder  
Hinge Cover (Sliding Door)



F E

1 7 0 0

### Technical Data

**Net Volume** 134 lt

**Product Dimensions HxWxD mm**  
818 x 595 x 548

### Optional Features

Hotstamp on the Glass Shelves  
Hotstamp Add-on on the Door Racks  
Wine Shelf  
Portable Wine Holder

### Standard Configuration

Removable Shelves  
Glass Shelf on Crisper  
Crisper  
Egg Holder  
Bottle Rack  
Door On Door  
Reversible Door



F E

1 6 5 0

### Technical Data

**Net Volume** 96 lt

**Product Dimensions HxWxD mm**  
818 x 595 x 548

### Standard Configuration

4 Star Freezer  
Ice Box  
Manual Defrost  
Door On Door  
Reversible Door



F E

1 6 0 0

### Technical Data

**Net Volume** 115 lt

**Net Fridge / Freezer Volume**  
98 lt / 17 lt

**Product Dimensions HxWxD mm**  
818 x 595 x 548

### Optional Features

Hotstamp on the Glass Shelves  
Hotstamp Add-on on the Door Racks  
Wine Shelf  
Portable Wine Holder

### Standard Configuration

Removable Shelf  
Glass Shelf on Crisper  
Crisper  
Safety Glass Shelves  
Egg Holder  
Bottle Rack  
Door On Door  
Reversible Door



F E



1 5 0 7

### Technical Data

#### Net Volume

126 lt

#### Product Dimensions HxWxD mm

875 x 540 x 545

### Standard Configuration

Inner Electronic Control

Removable Shelves

Safety Glass Shelves

Crisper

Egg Holder

Bottle Rack

### Built In – Single Door

Sliding Door

Door on Door

Reversible doors

### Optional Features

LED Touch HP Display

Push Button HP Display

LED Lighting (Right Side)

Humidity Controller

MaxiFresh Preserver

Wine Shelf

Portable Wine Holder

Hotstamp Add-on on the Door Racks

Hinge Cover (Sliding Door)



**E D**

1 5 0 0

### Technical Data

#### Net Volume

134 lt

#### Product Dimensions HxWxD mm

875 x 540 x 545

### Standard Configuration

Removable Shelves

Safety Glass Shelves

Crisper

Dairy Rack

Egg Holder

Bottle Rack

### Built In – Single Door

Sliding Door

Door on Door

Reversible doors

### Optional Features

Hotstamp Add-on on the Door Racks

Wine Shelf

Portable Wine Holder

Hinge Cover (Sliding Door)



**F E**

1 4 5 0

### Technical Data

#### Net Volume

95 lt

#### Product Dimensions HxWxD mm

875 x 540 x 545

### Standard Configuration

4 Star Freezer  
Freezer Baskets  
Ice Box  
Manual Defrost

### Built In – Single Door

Sliding Door  
Door on Door  
Reversible doors

### Optional Features

Hinge Cover (Sliding Door)



F E

1 4 0 7

### Technical Data

#### Net Volume

112 lt

#### Net Fridge / Freezer Volume

96 lt / 16 lt

#### Product Dimensions HxWxD mm

875 x 540 x 545

### Standard Configuration

Inner Electronic Control  
4 Star Freezer Compartment  
Freezer Door Indicator  
Ice Box  
Removable Shelves  
Safety Glass Shelves

### Built In – Double Door

Sliding Door  
Door on Door  
Reversible Doors

### Optional Features

LED Touch HP Display  
Push Button HP Display  
LED Lighting (Right Side)  
Humidity Controller  
MaxiFresh Preserver  
Wine Shelf  
Portable Wine Holder  
Hotstamp Add-on on the Door Racks  
Hinge Cover (Sliding Door)



E D

1 4 0 0

### Technical Data

#### Net Volume

121 lt

#### Net Fridge / Freezer Volume

104 lt / 17 lt

#### Product Dimensions HxWxD mm

875 x 540 x 545

### Standard Configuration

4 Star Freezer Compartment  
Freezer Door Indicator  
Ice Box  
Removable Shelves  
Safety Glass Shelves  
Crispers

### Built In – Double Door

Niche 880 mm

Sliding door

Door on Door

Reversible doors



### Optional Features

Hotstamp Add-on on the Door Racks  
Wine Shelf  
Portable Wine Holder  
Hinge Cover (Sliding Door)

**F E**

1 2 5

### Technical Data

#### Net Volume

114 lt

#### Net Fridge / Freezer Volume

100 lt / 14 lt

#### Product Dimensions HxWxD mm

820 x 497 x 579

### Standard Configuration

Direct Cooling  
Fridge AC LED Lighting  
Removable Safety Glass Shelf  
Egg Holder  
Transparent Accessories  
Bottle Rack  
Leveling Feet  
Reversible doors



**F E**



Refrigeration System	STATIC	STATIC	NO FROST	NO FROST	FROST FREE	FROST FREE	FROST FREE	FROST FREE
Model	2795	2795	2791	2791	2761	2761	2761	2761
Control System	ELECTRONIC	ELECTRONIC	ELECTRONIC	ELECTRONIC	ELECTRONIC	MECHANICAL	ELECTRONIC	MECHANICAL
Climatic Class	T/SN	ST/SN	ST/SN	ST/SN	T/N	T/N	T/N	T/N
Energy Class	F	E	F	E	F	F	E	E
Door	Standard	Standard	Standard	Standard	Standard	Standard	Standard	Standard
Performance(star rating)	-	-	4	4	4	4	4	4
Volume Refrigerator Total (net)(L)	294	294	0	0	180	180	180	180
Volume Freezer(net)(L)	0	0	197	197	63	63	63	63
Energy Consumption(kWh/24h)	0,383	0,306	0,712	0,569	0,747	0,747	0,597	0,597
Energy Consumption(kWh/year)	140	112	289	231	273	273	218	218
Freezing Capacity (kg/24h)	NA	NA	11,5	11,5	3,3	3,3	3,3	3,3
Temp. Rise Time(-18°C to -9°C)(h)	NA	NA	6,0	6,0	8,0	8,0	8,0	8,0
Noise Level (dBA)	39	39	40	40	41	41	41	41
Noise Class	C	C	C	C	C	C	C	C
Defrost System Type Frigde/Freezer	Manual	Manual	Auto	Auto	Auto	Auto	Auto	Auto
Product Dimensions (WxDxH)(mm)	540X545X1770	540X545X1770	540X545X1770	540X545X1770	540X545X1770	540X545X1770	540X545X1770	540X545X1770
Packaged Dimensions (WxDxH)(mm)	584X577X1834	584X577X1834	584X577X1834	584X577X1834	584X577X1834	584X577X1834	584X577X1834	584X577X1834
Freezer Shield	NO	NO	NO	NO	YES	YES	YES	YES
Loading quantity/20ft Container(pcs)	40	40	40	40	40	40	40	40
Loading quantity/40ft Container(pcs)	80	80	80	80	80	80	80	80
Loading quantity/40ft HC Container(pcs)	105	105	105	105	105	105	105	105

Refrigeration System	LESS FROST	LESS FROST	FROST FREE	FROST FREE	FROST FREE	FROST FREE	LESS FROST	LESS FROST
Model	2764	2764	2751	2751	2751	2751	2754	2754
Control System	MECHANICAL	MECHANICAL	ELECTRONIC	MECHANICAL	ELECTRONIC	MECHANICAL	MECHANICAL	MECHANICAL
Climatic Class	ST/N	ST/N	ST/N	ST/N	ST/N	ST/N	ST/N	ST/N
Energy Class	F	E	F	F	E	E	F	E
Door	Standard	Standard	Standard	Standard	Standard	Standard	Standard	Standard
Performance(star rating)	4	4	4	4	4	4	4	4
Volume Refrigerator Total (net)(L)	181	181	145	145	145	145	148	148
Volume Freezer(net)(L)	70	70	85	85	85	85	96	96
Energy Consumption(kWh/24h)	0,742	0,594	0,794	0,794	0,635	0,635	0,767	0,614
Energy Consumption(kWh/year)	271	217	290	290	232	232	280	224
Freezing Capacity (kg/24h)	3,25	3,25	3,9	3,9	3,9	3,9	4,6	4,6
Temp. Rise Time(-18°C to -9°C)(h)	9	9	9,0	9,0	9,0	9,0	11,5	11,5
Noise Level (dBA)	38	38	41	41	41	41	38	38
Noise Class	C	C	C	C	C	C	C	C
Defrost System Type Frigde/Freezer	Auto / Manual	Auto / Manual	Auto	Auto	Auto	Auto	Auto / Manual	Auto / Manual
Product Dimensions (WxDxH)(mm)	540X545X1770	540X545X1770	540X545X1770	540X545X1770	540X545X1770	540X545X1770	540X545X1770	540X545X1770
Packaged Dimensions (WxDxH)(mm)	584X577X1834	584X577X1834	584X577X1834	584X577X1834	584X577X1834	584X577X1834	584X577X1834	584X577X1834
Freezer Shield	YES	YES	YES	YES	YES	YES	NO	NO
Loading quantity/20ft Container(pcs)	40	40	40	40	40	40	40	40
Loading quantity/40ft Container(pcs)	80	80	80	80	80	80	80	80
Loading quantity/40ft HC Container(pcs)	105	105	105	105	105	105	105	105

Refrigeration System	STATIC	STATIC	STATIC	STATIC	LESS FROST	LESS FROST	STATIC	STATIC
Model	2630	2630	2300	2300	2460	2460	2500	2500
Control System	MECHANICAL	MECHANICAL	MECHANICAL	MECHANICAL	MECHANICAL	MECHANICAL	MECHANICAL	MECHANICAL
Climatic Class	N	N	ST/N	ST/N	T/N	T/N	N	N
Energy Class	F	E	F	E	F	E	F	E
Door	Standard	Standard	Standard	Standard	Standard	Standard	Standard	Standard
Performance(star rating)	4	4	4	4	4	4	-	-
Volume Refrigerator Total (net)(L)	172	172	134	134	154	154	200	200
Volume Freezer(net)(L)	38	38	38	38	57	57	0	0
Energy Consumption(kWh/24h)	0,610	0,487	0,616	0,493	0,698	0,558	0,345	0,276
Energy Consumption(kWh/year)	223	178	225	180	255	204	126	101
Freezing Capacity (kg/24h)	2,6	2,6	2,6	2,6	2,6	2,6	NA	NA
Temp. Rise Time(-18°C to -9°C)(h)	11	11	10	10	11,8	11,8	NA	NA
Noise Level (dBA)	38	37	39	39	38	38	38	38
Noise Class	C	C	C	C	C	C	C	C
Defrost System Type Frigde/Freezer	Auto/Manual	Auto/Manual	Auto/Manual	Auto/Manual	Auto/Manual	Auto/Manual	Auto	Auto
Product Dimensions (WxDxH)(mm)	540X545X1445	540X545X1445	540X545X1218	540X545X1218	540X545X1440	540X545X1440	540X545X1225	540X545X1225
Packaged Dimensions (WxDxH)(mm)	584X577X1509	584X577X1509	584X577X1282	584X577X1282	584X577X1504	584X577X1504	584X577X1289	584X577X1289
Freezer Shield	NO	NO	NO	NO	NO	NO	NO	NO
Loading quantity/20ft Container(pcs)	54	54	57	57	54	54	57	57
Loading quantity/40ft Container(pcs)	110	110	116	116	110	110	116	116
Loading quantity/40ft HC Container(pcs)	138	138	160	160	140	140	160	160

Refrigeration System	STATIC	STATIC	STATIC	STATIC	STATIC	STATIC	STATIC	STATIC
Model	2400	2400	1900	1900	1800	1800	1700	1700
Control System	MECHANICAL	MECHANICAL	MECHANICAL	MECHANICAL	MECHANICAL	MECHANICAL	MECHANICAL	MECHANICAL
Climatic Class	ST/N	ST/N	T/N	T/N	N	N	SN	SN
Energy Class	N	N	N	N	F	E	F	E
Door	Standard	Standard	Standard	Standard	Standard	Standard	Standard	Standard
Performance(star rating)	4	4	-	-	4	4	-	-
Volume Refrigerator Total (net)(L)	170	170	160	160	130	130	134	134
Volume Freezer(net)(L)	17	17	0	0	17	17	0	0
Energy Consumption(kWh/24h)	0,515	0,410	0,328	0,263	0,506	0,405	0,317	0,254
Energy Consumption(kWh/year)	188	150	120	96	185	148	116	93
Freezing Capacity (kg/24h)	2,6	2,6	NA	NA	2,6	2,6	NA	NA
Temp. Rise Time(-18°C to -9°C)(h)	8	8	NA	NA	9	9	NA	NA
Noise Level (dBA)	38	38	38	38	39	38	39	39
Noise Class	C	C	C	C	C	C	C	C
Defrost System Type Frigde/Freezer	Auto/Manual	Auto/Manual	Auto	Auto	Auto/Manual	Auto/Manual	Auto	Auto
Product Dimensions (WxDxH)(mm)	540X545X1225	540X545X1225	540X545X1020	540X545X1020	540X545X1020	540X545X1020	595X548X818	595X548X818
Packaged Dimensions (WxDxH)(mm)	584X577X1289	584X577X1289	584X577X1084	584X577X1084	584X577X1084	584X577X1084	659X586X883	659X586X883
Freezer Shield	NO	NO	NO	NO	NO	NO	NO	NO
Loading quantity/20ft Container(pcs)	57	57	80	80	80	80	87	87
Loading quantity/40ft Container(pcs)	116	116	168	168	168	168	180	180
Loading quantity/40ft HC Container(pcs)	160	160	168	168	168	168	214	214

Refrigeration System	STATIC	STATIC	STATIC	STATIC	STATIC	STATIC
Model	2507	2507	2407	2407	1907	1907
Control System	ELECTRONIC	ELECTRONIC	ELECTRONIC	ELECTRONIC	ELECTRONIC	ELECTRONIC
Climatic Class	N	N	N	N	N	N
Energy Class	E	D	E	D	E	D
Door	Standard	Standard	Standard	Standard	Standard	Standard
Performance(star rating)	TBD	TBD	4	4	TBD	TBD
Volume Refrigerator Total (net)(L)	193	193	162,2	162,2	154	154
Volume Freezer(net)(L)	TBD	TBD	16,3	16,3	TBD	TBD
Energy Consumption(kWh/24h)	0,274	0,22	0,409	0,327	0,261	0,208
Energy Consumption(kWh/year)	100,01	79,94	149,31	119,44	95,27	75,92
Freezing Capacity (kg/24h)	TBD	TBD	2,6	2,6	TBD	TBD
Temp. Rise Time(-18°C to -9°C)(h)	TBD	TBD	TBD	TBD	TBD	TBD
Noise Level (dBA)	TBD	TBD	TBD	TBD	TBD	TBD
Noise Class	TBD	TBD	TBD	TBD	TBD	TBD
Defrost System Type Frigde/Freezer	Auto	Auto	Auto/Manual	Auto/Manual	Auto	Auto
Product Dimensions (WxDxH)(mm)	540X545X1225	540X545X1225	540X545X1225	540X545X1225	540X545X1020	540X545X1020
Packaged Dimensions (WxDxH)(mm)	584X577X1289	584X577X1289	584X577X1289	584X577X1289	584X577X1084	584X577X1084
Freezer Shield			YES	YES		
Loading quantity/20ft Container(pcs)	57	57	57	57	80	80
Loading quantity/40ft Container(pcs)	116	116	116	116	168	168
Loading quantity/40ft HC Container(pcs)	160	160	160	160	168	168

Refrigeration System	STATIC	STATIC	STATIC	STATIC	STATIC	STATIC
Model	1807	1807	1507	1507	1407	1407
Control System	ELECTRONIC	ELECTRONIC	ELECTRONIC	ELECTRONIC	ELECTRONIC	ELECTRONIC
Climatic Class	N	N	T/SN	T/SN	N	N
Energy Class	E	D	E	D	E	D
Door	Standard	Standard	TBD	TBD	Standard	Standard
Performance(star rating)	4	4	TBD	TBD	4	4
Volume Refrigerator Total (net)(L)	123,4	123,4	126	126	96	96
Volume Freezer(net)(L)	16,3	16,3	TBD	TBD	16,3	16,3
Energy Consumption(kWh/24h)	0,405	0,324	0,251	0,201	0,405	0,324
Energy Consumption(kWh/year)	147,78	118,22	91,62	73,37	148,08	118,46
Freezing Capacity (kg/24h)	2,6	2,6	TBD	TBD	2,6	2,6
Temp. Rise Time(-18°C to -9°C)(h)	TBD	TBD	TBD	TBD	TBD	TBD
Noise Level (dBA)	TBD	TBD	TBD	TBD	TBD	TBD
Noise Class	TBD	TBD	TBD	TBD	TBD	TBD
Defrost System Type Frigde/Freezer	Auto/Manual	Auto/Manual	Auto	Auto	Auto/Manual	Auto/Manual
Product Dimensions (WxDxH)(mm)	540X545X1020	540X545X1020	540X545X875	540X545X875	540X545X875	540X545X875
Packaged Dimensions (WxDxH)(mm)	584X577X1084	584X577X1084	584X577X939	584X577X939	584X577X939	584X577X939
Freezer Shield	YES	YES			YES	YES
Loading quantity/20ft Container(pcs)	80	80	88	88	88	88
Loading quantity/40ft Container(pcs)	168	168	180	180	180	180
Loading quantity/40ft HC Container(pcs)	168	168	210	210	210	210



Refrigeration System	STATIC	STATIC	STATIC	STATIC	STATIC	STATIC	STATIC	STATIC
Model	1650	1650	1600	1600	1500	1500	1450	1450
Control System	MECHANICAL	MECHANICAL	MECHANICAL	MECHANICAL	MECHANICAL	MECHANICAL	MECHANICAL	MECHANICAL
Climatic Class	SN	SN	ST/SN	T/SN	SN	T/SN	T/SN	T/SN
Energy Class	F	E	F	E	F	E	F	E
Door	Standard	Standard	Standard	Standard	Standard	Standard	Standard	Standard
Performance(star rating)	4	4	4	4	-	-	4	4
Volume Refrigerator Total (net)(L)	0	0	98	98	134	134	0	0
Volume Freezer(net)(L)	96	96	17	17	0	0	95	95
Energy Consumption(kWh/24h)	0,542	0,434	0,512	0,408	0,317	0,254	0,545	0,436
Energy Consumption(kWh/year)	220	176	187	149	116	93	221	177
Freezing Capacity (kg/24h)	5,0	5,0	2,6	2,6	NA	NA	6,0	6,0
Temp. Rise Time(-18°C to -9°C)(h)	12,0	12,0	7,0	7,0	NA	NA	8,0	8,0
Noise Level (dBA)	39	39	39	39	38	38	38	38
Noise Class	C	C	C	C	C	C	C	C
Defrost System Type Frigde/Freezer	Manual	Manual	Auto/Manual	Auto/Manual	Auto	Auto	Manual	Manual
Product Dimensions (WxDxH)(mm)	595X548X818	595X548X818	595X548X818	595X548X818	540X545X875	540X545X875	540X545X875	540X545X875
Packaged Dimensions (WxDxH)(mm)	659X586X883	659X586X883	659X586X883	659X586X883	584X577X939	584X577X939	584X577X939	584X577X939
Freezer Shield	NO	NO	NO	NO	NO	NO	NO	NO
Loading quantity/20ft Container(pcs)	87	87	87	87	88	88	88	88
Loading quantity/40ft Container(pcs)	180	180	180	180	180	180	180	180
Loading quantity/40ft HC Container(pcs)	214	214	214	214	210	210	210	210

Refrigeration System	STATIC	STATIC	STATIC	STATIC
Model	1400	1400	125	125
Control System	MECHANICAL	MECHANICAL	MECHANICAL	MECHANICAL
Climatic Class	N	N	ST/SN	ST/SN
Energy Class	F	E	F	E
Door	Standard	Standard	Standard	Standard
Performance(star rating)	4	4	4	4
Volume Refrigerator Total (net)(L)	104	104	100	100
Volume Freezer(net)(L)	17	17	14	14
Energy Consumption(kWh/24h)	0,506	0,405	0,476	0,380
Energy Consumption(kWh/year)	185	148	174	139
Freezing Capacity (kg/24h)	2,6	2,6	2	2,6
Temp. Rise Time(-18°C to -9°C)(h)	7	7	7	7
Noise Level (dBA)	38	38	41	41
Noise Class	C	C	C	C
Defrost System Type Frigde/Freezer	Auto/Manual	Auto/Manual	Auto/Manual	Auto/Manual
Product Dimensions (WxDxH)(mm)	540X545X875	540X545X875	497X579X820	497X579X820
Packaged Dimensions (WxDxH)(mm)	584X577X939	584X577X939	540X610X879	540X610X879
Freezer Shield	NO	NO	NO	NO
Loading quantity/20ft Container(pcs)	88	88	96	96
Loading quantity/40ft Container(pcs)	180	180	207	207
Loading quantity/40ft HC Container(pcs)	210	210	244	244



## NOTES

[illegible]



**Vestel Trade Co.**

Organize Sanayi Bölgesi, 45030 Manisa/Türkiye

**Phone:** 90 - 236 233 25 82

**Fax:** 90 - 236 233 25 84

vesteltrade@vestel.com.tr

www.vestelinternational.com

**Vestel Germany GmbH**

Parking 6 D-85748 Garching bei München/Germany

**Phone:** 49 - 89 55295 - 0

**Fax:** 49 - 89 55295 - 2000

info@vestel-germany.de

www.vestel-germany.de

**Vestel UK Ltd**

Vestel House, Waterside Drive Langley, Berkshire SL3 6EZ

**Phone:** 44 - 3330 146 400

info@vestel-uk.com

www.vestel.co.uk

**Vestel France SASU**

17 Rue de la Couture - Parc Icade BP 10190 - 94563

RUNGIS Cedex, France

**Phone:** 33 - 146 75 00 29

**Fax:** 33 - 141 80 99 31

www.vestel-france.fr

**Vestel Holland B.V.**

Groothandelsgebouw Stationsplein 45 Unit A2.191,

3013 AK Rotterdam, The Netherlands

**Phone:** 31 - 10 235 1005

info@vestelbenelux.nl

www.vestelbenelux.nl

**Vestel Iberia, S.L.**

Paseo Doce Estrellas, 2, 3o. 28042. Madrid, Spain

**Phone:** 34 - 91 320 63 98

**Fax:** 34 - 91 320 52 58

vestel@vestel.es

www.vestel.es

**Vestel CIS Ltd.**

2 Gorbunova st., Bld. No 3, office A305 Moscow,

121569, Russia

**Phone:** 7 - 495 956 8230

**Fax:** 7 - 095 956 8233

info@vestel.ru

www.vestel.ru

**Vestel Electronics Gulf DMC**

Unit No: ALMAS-06-C, 6th floor, ALMAS Tower, Plot

No: JLT-PH1-A0 Jumeirah Lakes Towers, Dubai, UAE

info@vestel-gulf.ae

www.vestel-gulf.ae

**Vestel Central Asia**

Kazakhstan/Almaty Baizakova 125, NP-1, office: 504.

**Phone:** 7 - 727 263 39 39

info@vestel.kz

**Vestel Poland**

Salsy 2 str., 02-823 Warsaw, Poland

**Phone:** 48 - 22 272 73 00

info@vestel-poland.com

www.vestel-poland.com

**Vestel Electronica**

Bucharest, 1st District, 2-4 Murmurului Entrance,

014114 Bucharest, Romania

**Phone:** 40 - 31 425 42 91

**Fax:** 40 - 31 425 42 95

office@vestel.ro

www.vestel.ro

**Vestel China**

Vestel Electronics (Shanghai) Trading Co., Ltd.

Shenzhen Branch

Room 2606, Time Square Excellence. No 4068 Yi Tian

Rd, Fu Tian District. Shenzhen City, Guangdong, China.

518048

**Phone:** 86 -755-2266 6726

**Vestel Vietnam**

Floor 46, Bitexco Financial Tower , 02 Hai Trieu, Ben

Nghe Ward, District 1 , Ho Chi Minh City, Vietnam

**Phone:** 84 - 28 6287 5904

**Vestel USA INC.**

390 Fifth Avenue, Suite 805 New York, NY, 10018

**Phone:** 1 - 212 689 4622

**Fax:** 212 689 4380



# VESTEL

Organize Sanayi Bolgesi, 45030  
Manisa/Turkey

**Phone:** 90 - 236 233 25 82

**Fax:** 90 - 236 233 25 84

vesteltrade@vestel.com.tr  
www.vestelinternational.com

FOLLOW US ON SOCIAL MEDIA



/vestelinternational