



**Interactive Flat
Panel Displays**
2018-2019

VESTEL

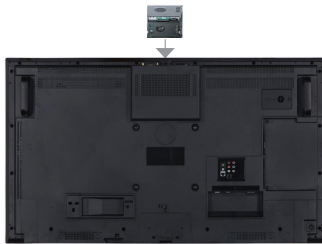

VESTEL

IFM Series

IR Interactive Flat Panel Displays

55", 65", 75", and 86"

Designed with LED touch screen technology, the Vestel Interactive Flat Panel Display is a dynamic and engaging solution for both education and business environments. Encouraging interactive communication, its technology facilitates learning as well as information sharing.



OPS Support

All our products in this series have compliance with OPS (Open Pluggable Standard). OPS will empower your screens with enhanced processing power and ability to choose Windows or Android as your operating system to fit your specific application.



Suitable Design For Meeting Rooms

Use Vestel's interactive flat panel displays to bring your workforce together. Our Ultra HD products can be used for interactive presentations, brainstorming and training.



High Definition Resolution

Vestel provides full HD quality with 55" IFPD, and ultra HD with 65" IFPD. You will be able to experience excellent content via USB, HDMI, DVI and Display Ports, and our pluggable computers (OPS).



Touch Support

Our touch screens are compatible with this series. Infrared (IR) Touch Screens is designed to equip your current product with user-interactivity allowing the display to be smart display and many interactive applications to be enjoyed by the end users. The design also permits any person to overlay the touch screen on the display easily.

Anti-Glare Glass

Our screens come with a special screen to prevent light reflection and providing smooth touch experience with antiglare technology.

Tempered Glass

All our touch screens have toughened glass material preventing any damage to the touch panels.

Interactive White Board Application

Thanks to their 4K UHD resolution, our screens can display content more clearly, bringing every on-screen detail bang into focus.

Advanced Connectivity

With wireless connectivity, this series can be set up to screen-share via Miracast and give you the option to freely connect without any cabling.

Components



Quick start guide



Instruction manual



Wall mounting kit



IR extender

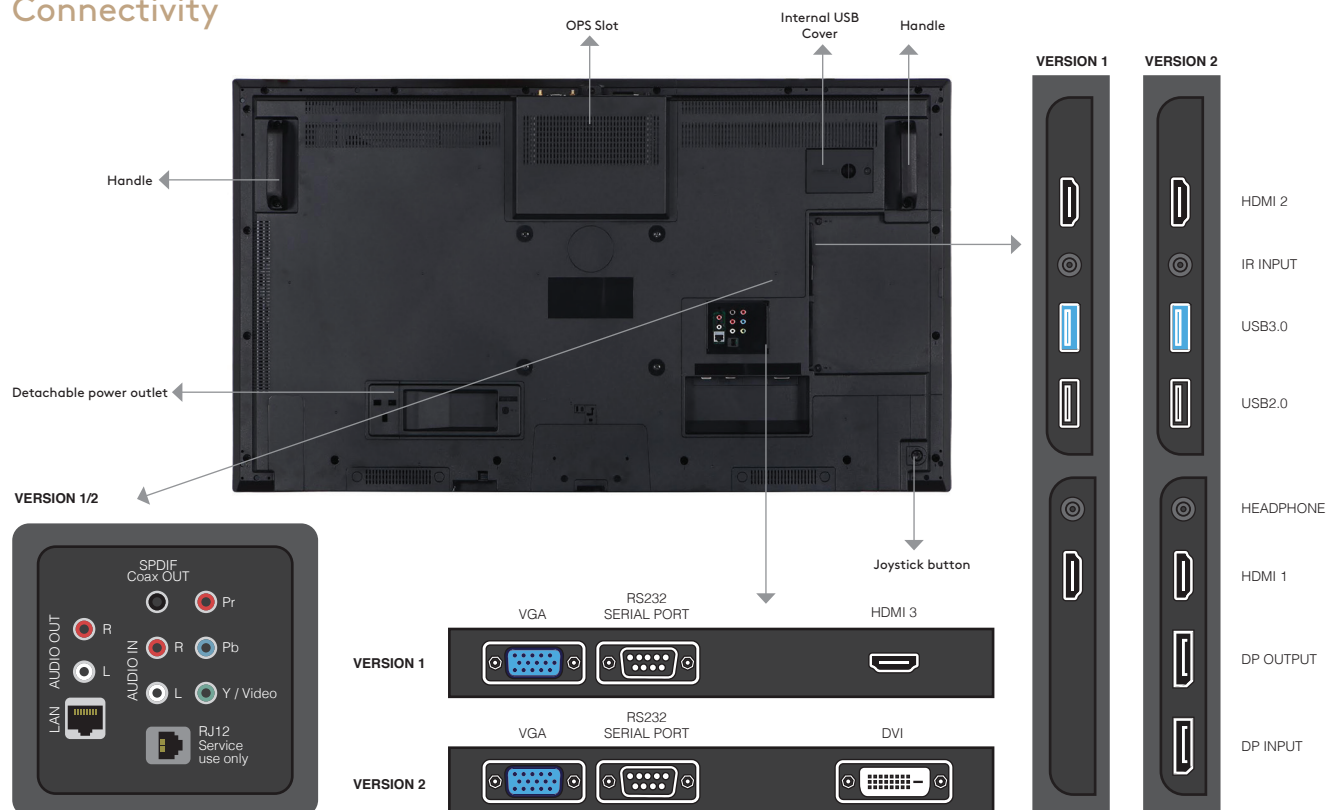


Batteries for remote controllers

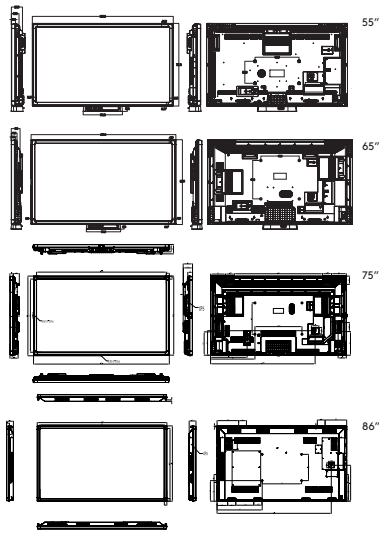


Remote controller

Connectivity



IR Interactive Flat Panel Displays



| | IF55UG402 | IFM65UG602 | IF75T633/7 | IF86TI630B/7 |
|-------------------------------|--|--|-------------------------------------|-------------------------------------|
| | Panel | | | |
| Mainboard Model | System-On-Chip Model: 17MB120DSR3 | System-On-Chip Model: 17MB120DSR3 | System-On-Chip Model: 17MB120DSR4 | System-On-Chip Model: 17MB120DSR4 |
| H-Freq | 67.5 KHz | 67.5 KHz | 135 KHz | 67.5 kHz |
| Max. Pixel Freq. | 74.25 MHz | 74.25 MHz | 78 MHz | 280 kHz |
| V-Freq | 60 Hz | 60 Hz | 60 Hz | 120 Hz |
| Size | 55" | 65" | 75" | 86" |
| Backlight Type | DLED | DLED | DLED | ELED |
| Panel Technology | IPS | IPS | IPS | IPS |
| Panel Type | 16/7 Panel | 16/7 Panel | 16/7 Panel | 16/7 Panel |
| Front Type | Ultra Narrow Bezel | Ultra Narrow Bezel | Touch Bezel Type | Black Touch Bezel Type |
| Orientation | Horizontal | Horizontal | Horizontal | Horizontal |
| Resolution | 1920x1080 (16:9) - FHD | 3840 x 2160 (16:9) - UHD | 3840 x 2160 (16:9) - UHD | 3840 x 2160 (16:9) - UHD |
| Active Area | 1210 mm (H) x 681 mm (V) | 1429 mm (H) x 804 mm (V) | 1650 (H) x 928 (V) | 1907 (H) x 1076 (V) |
| Brightness (Typ.) | 400 cd/m2 | 400 cd/m2 | 350 cd/m2 | 500 cd/m2 |
| Contrast Ratio (Typ.) | 1200:1 | 1200:1 | 1200:1 | 1200:1 |
| Panel life time (Min./Typ.) | 30000/50000 Hr | 30000/50000 Hr | 30000 Hr | 50000 Hr |
| Viewing Angle | 178° | 178° | 178° | 178° |
| Response Time | 9 ms | 9 ms | 9 ms | 8 ms |
| Color Value | 8 Bit, 16.7 M Colors | 8 Bit, 16.7 M Colors | 8 Bit, 16.7 M Colors | 10 Bit, 1.07Billion colors |
| Areas of Usage | Indoor | Indoor | Indoor | Indoor |
| | Monitor Connectivity | | | |
| RGB Input | Dsub 15 PIN VGA CON., YPbPr | Dsub 15 PIN VGA CON., YPbPr | Dsub 15 PIN VGA CON., YPbPr | Dsub 15 PIN VGA CON., YPbPr |
| RGB Output | N/A | N/A | N/A | N/A |
| VIDEO Input | 2xHDMI2.0, DP1.2a, DVI, 1xUSB3.0, 1xUSB2.0 | 2xHDMI2.0, DP1.2a, DVI, 1xUSB3.0, 1xUSB2.0 | HDMI2.0, DP1.2a, 1xUSB3.0, 1xUSB2.0 | HDMI2.0, DP1.2a, 1xUSB3.0, 1xUSB2.0 |
| VIDEO Output | DP1.2a | DP1.2a | DP1.2a, HDMI out | DP1.2a, HDMI out |
| AUDIO Input | LINE IN JACK | LINE IN JACK | LINE IN JACK | LINE IN JACK |
| AUDIO Output | LINE OUT JACK | LINE OUT JACK | LINE OUT JACK | LINE OUT JACK |
| External Control | RS232(DSUB 9P), RJ12, Ethernet | RS232(DSUB 9P), RJ12, Ethernet | RS232(DSUB 9P), RJ12, Ethernet | RS232(DSUB 9P), RJ12, Ethernet |
| External Sensor | N/A | N/A | N/A | N/A |
| | Mechanical Features | | | |
| Size | 1280mm (L) x 751mm (H) x 123mm (D) | 1507mm (L) x 882mm (H) x 120mm (D) | 1731mm (L) x 1008mm (H) x 119mm (D) | 1975mm (L) x 1146mm (H) x 103mm (D) |
| Shipping Size | - | 1670mm (L) x 1073mm (H) x 266mm (D) | 1948mm (L) x 1248mm (H) x 310mm (D) | 2163mm (L) x 1405mm (H) x 318mm (D) |
| Weight | 29 KG | 51.5 KG | 80 KG | - |
| Shipping Weight | 35 KG | 59 KG | 90 KG | - |
| Vesa Mounting Size | 400 mm (H) x 200 mm (V) M6 | 400 mm (H) x 400 mm (V) M6 | 600 mm (H) x 400 mm (V) M6 | 600 mm (H) x 400 mm (V) M6 |
| Bezel Width (Bottom-Side-Top) | 34 mm / 34 mm / 34mm | 38 mm / 38 mm / 38 mm | 38 mm / 38 mm / 38 mm | 38 mm / 38 mm / 38 mm |
| | Working Conditions | | | |
| Temperature Conditions | +40°C/0°C | +40°C/0°C | +40°C/0°C | +40°C/0°C |
| Humidity | 90% | 90% | 90% | 90% |

IF55UG402

IF75T633/7

IFM65UG602

IF86TI630B/7

| | IF55UG402 | IFM65UG602 | IF75T633/7 | IF86TI630B/7 |
|------------------------------------|---|---|---|---|
| | General Features | | | |
| Main Features | Open Content Management Support, Scheduler, USB-Autoplay, Auto-Launch, HDMI-CEC, HDMI-Hotplug, Auto-switch on Failover, Panel Lock | Open Content Management Support, Scheduler, USB-Autoplay, Auto-Launch, HDMI-CEC, HDMI-Hotplug, Auto-switch on Failover, Panel Lock | Open Content Management Support, Scheduler, USB-Autoplay, Auto-Launch, HDMI-CEC, HDMI-Hotplug, Auto-switch on Failover, Panel Lock, OSD Rotation, No Signal Power Off, Screen Saver, Pixel shift, Scheduler, Videowall support, remote control via LAN, Real Time Clock | Open Content Management Support, Scheduler, USB-Autoplay, Auto-Launch, HDMI-CEC, HDMI-Hotplug, Auto-switch on Failover, Panel Lock, OSD Rotation, No Signal Power Off, Screen Saver, Pixel shift, Scheduler, Videowall support, remote control via LAN, Real Time Clock |
| Mechanical Features | IR Touch, Joystick, IR Extender Support, Rocker Switch, Detachable power cable, Carrying slots, Detachable logo positioning, Internal usb cover, Cable Holder | IR Touch, Joystick, IR Extender Support, Rocker Switch, Detachable power cable, Carrying slots, Detachable logo positioning, Internal usb cover, Cable Holder | Joystick, IR Extender Support, Rocker Switch, Detachable power cable, Carrying slots, Detachable logo positioning, Internal usb cover, Cable Holder | Joystick, IR Extender Support, Rocker Switch, Detachable power cable, Carrying slots, Detachable logo positioning, Internal usb cover, Cable Holder |
| Optional Features | OPS Compliance | OPS Compliance | OPS Compliance | OPS Compliance |
| Speaker | 2 x 8 W | 2 x 8 W | 2 x 12 W | 2 x 12 W |
| | Power | | | |
| Power Supply | 110 VAC - 240 VAC | 110 VAC - 240 VAC | 110 VAC - 240 VAC | 110 VAC - 240 VAC |
| Power Consumption(Off) | ≤0.5W | ≤0.5W | ≤0.5W | ≤0.5W |
| Power Consumption (Active-StandBy) | 14 W | 14 W | - | - |
| Power Consumption(On) | 54 W | 74 W | - | - |
| | Accessory | | | |
| Standard | QSG, Warranty Card, IB, Power Cord, Remote Control, RC Battery, Mounting Kit, Extension Brackets, IR Extender Cable | QSG, Warranty Card, IB, Power Cord, Remote Control, RC Battery, Mounting Kit, Extension Brackets, IR Extender Cable | QSG, Warranty Card, IB, Power Cord, Remote Control Unit, RC Battery, Mounting Kit, Extension Brackets, IR Extender Cable | QSG, Warranty Card, IB, Power Cord, Remote Control Unit, RC Battery, Mounting Kit, Extension Brackets, IR Extender Cable |
| | Certification | | | |
| Safety Approval | ✓ | ✓ | ✓ | ✓ |
| EMC Approval | ✓ | ✓ | ✓ | ✓ |
| CE | ✓ | ✓ | ✓ | ✓ |
| Reliability Approval | ✓ | ✓ | ✓ | ✓ |
| | Touch Screen (Overlay Design) | | | |
| Type of Touch Technology | Infrared (IR) Technology | Infrared (IR) Technology | Infrared (IR) Technology | Infrared (IR) Technology |
| Supported Point | 10 Points | 10 Points | 10 Points | 10 Points |
| Sensitivity | Any touch with finger, gloved hand or pointer | Any touch with finger, gloved hand or pointer | Any touch with finger, gloved hand or pointer | Any touch with finger, gloved hand or pointer |
| Connectivity | HID, TUIO, Flash | HID, TUIO, Flash | HID, TUIO, Flash | HID, TUIO, Flash |
| Supported OS and applications | Windows®7, Windows®8, Windows®10, Vista, XP, Mac® OS, Linux, Android | Windows®7, Windows®8, Windows®10, Vista, XP, Mac® OS, Linux, Android | Windows®7, Windows®8, Windows®10, Vista, XP, Mac® OS, Linux, Android | Windows®7, Windows®8, Windows®10, Vista, XP, Mac® OS, Linux, Android |
| Orientation | Portrait and landscape support | Portrait and landscape support | Portrait and landscape support | Portrait and landscape support |
| Calibration | No need | No need | No need | No need |
| Accuracy | ≤90 < | ≤90 < | ≤90 < | ≤90 < |
| Reporting Rate | Up to 450 fps | Up to 450 fps | Up to 450 fps | Up to 450 fps |
| Glass type | Anti Glared (AG), Tempered | Anti Glared (AG), Tempered | Anti Glared (AG), Tempered | Anti Glared (AG), Tempered |
| Frame rate | up to 450 fps | up to 450 fps | up to 450 fps | up to 450 fps |
| Communication | USB 2.0 | USB 2.0 | USB 2.0 | USB 2.0 |
| Power supply Mode | USB | USB | USB | USB |
| Supply voltage | DC 5V +/- 5% | DC 5V +/- 5% | DC 5V +/- 5% | DC 5V +/- 5% |
| Average current | <400mA | <400mA | <400mA | <400mA |
| Response time | <10ms | <10ms | <10ms | <10ms |
| Touch Accuracy | +/-2mm (over 90% area) | +/-2mm (over 90% area) | +/-2mm (over 90% area) | +/-2mm (over 90% area) |
| Object sizes for touch | 5mm | 5mm | 5mm | 5mm |
| Touch Durability | Unlimited | Unlimited | Unlimited | Unlimited |
| HID compatibility | Yes USB | Yes USB | Yes USB | Yes USB |





VESTEL

IFC Series

PCAP Interactive Flat Panel Displays

65"

Designed with LED touch screen technology, the Vestel Interactive Flat Panel Display is a dynamic and engaging solution for both education and business environments. Encouraging interactive communication, its technology facilitates learning as well as information sharing.



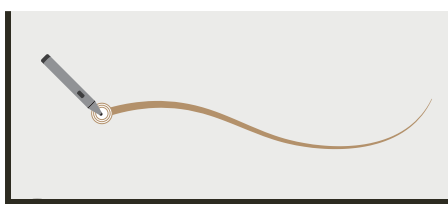
Powered by Windows 10

If desired, Vestel's Capacitive IFC is able to power up your meetings with a plug-in computer that comes with dedicated software such as **OneNote for business** & **Skype for business***. Additional variety of business and education software can also be utilized within Vestel's Capacitive IFPD.



Active Pen

Making use of styluses, Vestel's newest IFC Series offers unprecedented working experience where several people can work on the screen simultaneously. Additionally, the advanced capacitive screen technology detects your hand-writing in such a way that you don't even have to keep your palm off the screen.



Pressure sensitive touch screen

Vestel's newest IFC Series differentiates itself from its rivals with its revolutionary touch technology, pressure sensitive touch. This advanced technology recognizes the level of pressure and acts accordingly such as writing thin or bold. No need to go through all menu items over and over again. With this feature, it is just a click away.



Palm Rejection

Vestel's PCAP touch screen solution gives you a perfect experience like you are writing on a sheet of paper in real life. This sensitive technology allows you to use Vestel Interactive Flat Panel Display in your meeting rooms to take notes and also share them simultaneously.

Establish collaborative team work

Vestel's Capacitive IFC screen unites your team in a creative and dynamic atmosphere where each member can contribute effortlessly. Thanks to its 20-point capacitive touch screen, with a stylus or fingertip, you can immediately work on the document at hand while others continue working at their parts.

Join meetings from anywhere in the world

Taking advantage of particular professional software such as *Skype for Business** and *Office 365* for Windows 10, Vestel's Capacitive Interactive Flat Panel Display allows your business partners to join your meetings effortlessly regardless of their location in the world. You can even work on the same document and decide your future plans real-time.

Extensive connectivity options

Vestel's PCAP Interactive Flat Panel Display supports many different video input/output such as HDMI in/out, DVI, Display Port in/out, VGA and audio input/output Line-in, Headphone out.

Stylish look

Making use of Projective Capacitive Touch technology not only improved the capabilities of the IFPD but also made the display thinner and stylish. With Vestel PCAP IFPD, your office will gain an elegant look.

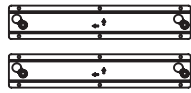
Components



Quick start guide



Instruction manual



Wall mounting kit



IR extender

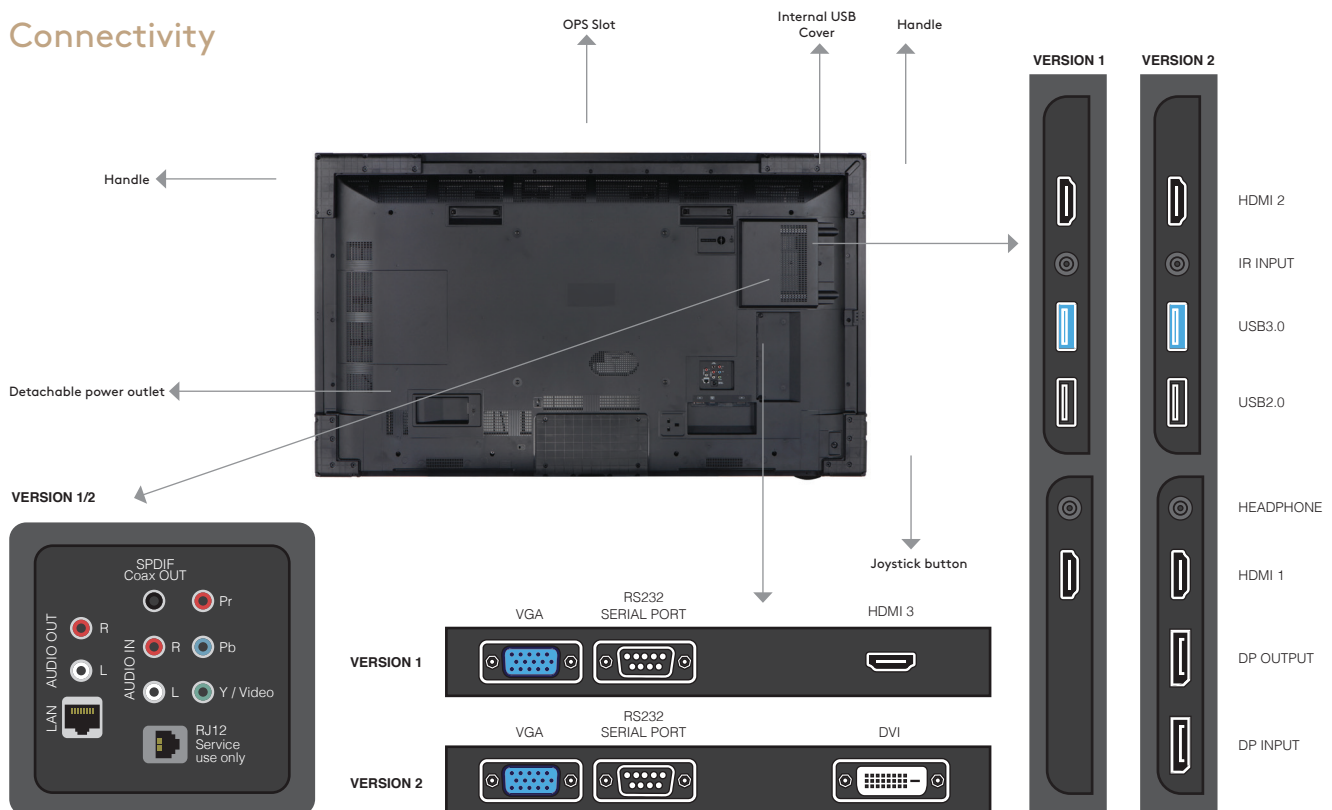


Batteries for remote controllers

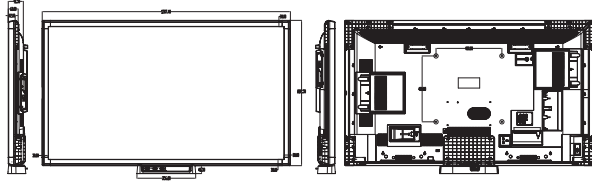


Remote controller

Connectivity



PCAP Interactive Flat Panel Displays



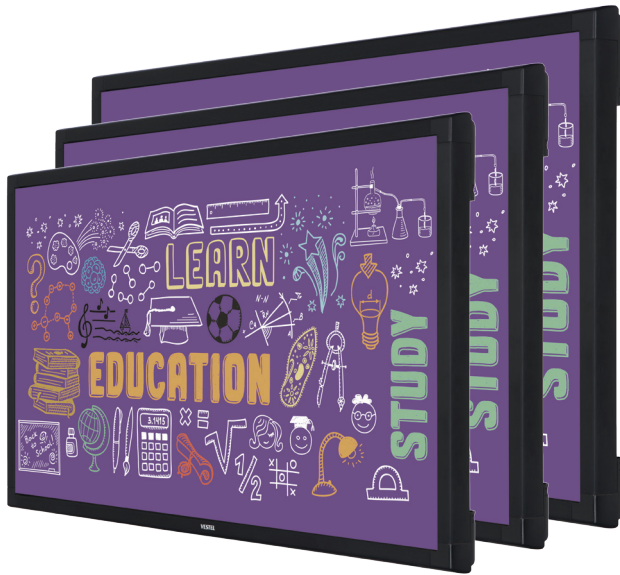
65"

| IFC65TI632/6 | |
|-------------------------------|---|
| Panel | |
| Mainboard Model | System-On-Chip Model: 17MB120DSR4 |
| H-Freq | 67.5 KHz |
| Max. Pixel Freq. | 74.25 MHz |
| V-Freq | 60 Hz |
| Size | 65" |
| Backlight Type | DLED |
| Panel Technology | IPS |
| Panel Type | 16/7 Panel |
| Front Type | Black PCAP Touch Bezel |
| Orientation | Horizontal |
| Resolution | 3840 x 2160 (16:9) - UHD |
| Active Area | 1429 mm (H) x 804 mm (V) |
| Brightness (Typ.) | 400 cd/m2 |
| Contrast Ratio (Typ.) | 1200:1 |
| Panel life time (Min./Typ.) | 30000 / 50000 Hr |
| Viewing Angle | 178° |
| Response Time | 9 ms |
| Color Value | 8 Bit, 16.7 M Colors |
| Areas of Usage | Indoor |
| Monitor Connectivity | |
| RGB Input | Dsub 15 PIN VGA CON., YPbPr |
| RGB Output | N/A |
| VIDEO Input | 2xHDMI2.0, 1xUSB3.0, 1xUSB2.0, 1xUSB2.0 (USB cover) |
| VIDEO Output | HDMI 2.0 |
| AUDIO Input | LINE IN JACK |
| AUDIO Output | LINE OUT JACK |
| External Control | RS232 (DSUB 9P), RJ12, Ethernet |
| External Sensor | N/A |
| Mechanical Features | |
| Size | 1507mm (L) x 882mm (H) x 120mm (D) |
| Shipping Size | 1670mm (L) x 1073mm (H) x 266mm (D) |
| Weight | 42.5 KG |
| Shipping Weight | 47.5 KG |
| Vesa Mounting Size | 400 mm(H)x 400 mm(V) M6 |
| Bezel Width (Bottom-Side-Top) | 38 mm / 38 mm / 38 mm |
| Working Conditions | |
| Temperature Conditions | +40°C / 0°C |
| Humidity | 90% |
| General Features | |
| Main Features | Open Content Management Support, Scheduler, USB-Autoplay, Auto-Launch, HDMI-CEC, HDMI-Hotplug, Auto-switch on Failover, Panel Lock |
| Mechanical Features | IR Touch, Joystick, IR Extender Support, Rocker Switch, Detachable power cable, Carrying slots, Detachable logo positioning, Internal usb cover, Cable Holder |
| Optional Features | OPS Compliance |
| Speaker | 2 x 8 W |

IFC65TI632/6

| IFC65TI632/6 | |
|------------------------------------|---|
| Power | |
| Power Supply | 110 VAC - 240 VAC |
| Power Consumption(Off) | ≤0.5W |
| Power Consumption (Active-StandBy) | 14 W |
| Power Consumption(On) | 74 W |
| Accessory | |
| Standard | QSG, Warranty Card, IB, Power Cord, Remote Control, RC Battery, Mounting Kit, Extension Brackets, IR Extender Cable |
| Certification | |
| Safety Approval | ✓ |
| EMC Approval | ✓ |
| CE | ✓ |
| Reliability Approval | ✓ |
| Touch Screen (Overlay Design) | |
| Type of Touch Technology | PCAP Technology |
| Supported Point | 10 Points |
| Sensitivity | Finger (Multi-touch), Active Pen (Single Touch), 1024 pt |
| Connectivity | HID |
| Supported OS and applications | Windows®7, Windows®8, Windows®10, Vista, XP, Mac® OS, Linux, Android |
| Orientation | Portrait and landscape support |
| Calibration | No need |
| Accuracy | %90 < |
| Reporting Rate | >100Hz |
| Glass type | Anti Glared (AG), Tempered |
| Frame rate | up to 450 fps |
| Communication | USB 1.1 Full Speed |
| Power supply Mode | USB |
| Supply voltage | DC 5V +/- 5% |
| Average current | <400mA |
| Response time | <25ms |
| Touch Accuracy | +/-2mm (over 90% area) |
| Object sizes for touch | 5mm |
| Touch Durability | 5 years |
| HID compatibility | Yes USB |





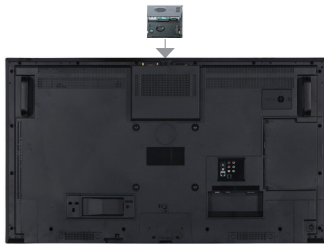
VESTEL

IFD Series

Dual OS Interactive Flat Panel Displays

65", 75", and 86"

Designed with LED touch screen technology, IFD series comes with on-board Android 7.1 OS. You can either use Android or upgrade your touch display with Windows 10 OPS.



OPS Support

All our products in this series have compliance with OPS (Open Pluggable Standard). OPS will empower your screens with enhanced processing power and ability to choose Windows or Android as your operating system to fit your specific application.



Suitable Design For Meeting Rooms

Use Vestel's interactive flat panel displays to bring your workforce together. Our Ultra HD products can be used for interactive presentations, brainstorming and training.



High Definition Resolution

Vestel provides Ultra HD quality. You will be able to experience excellent content via USB, HDMI, DVI and Display Ports, and our pluggable computers (OPS).



Touch Support

Our touch screens are compatible with this series. Infrared (IR) Touch Screens is designed to equip your current product with user-interactivity allowing the display to be smart display and many interactive applications to be enjoyed by the end users. The design also permits any person to overlay the touch screen on the display easily.

Anti-Glare Glass

Our screens come with a special screen to prevent light reflection and providing smooth touch experience with antiglare technology.

Tempered Glass

All our touch screens have toughened glass material preventing any damage to the touch panels.

Interactive White Board Application

Thanks to their 4K UHD resolution, our screens can display content more clearly, bringing every on-screen detail bang into focus.

Advanced Connectivity

With wireless connectivity, this series can be set up to screen-share via Miracast and give you the option to freely connect without any cabling.

Components



Quick start guide



Instruction manual



Wall mounting kit



IR extender

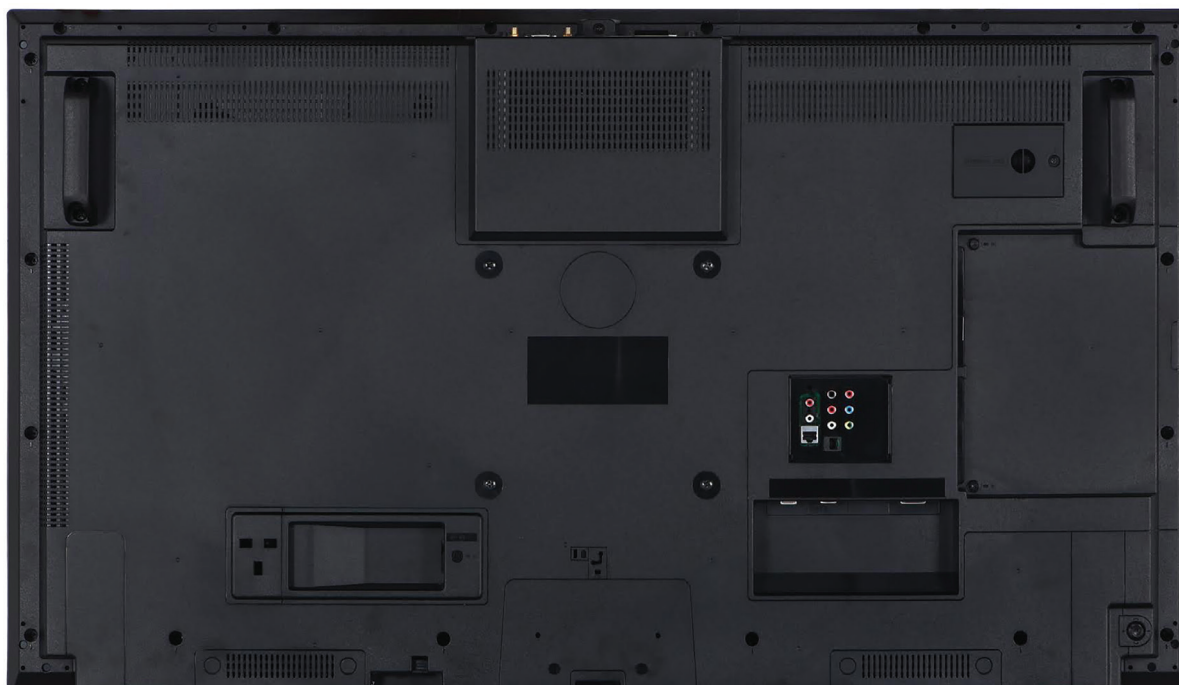


Batteries for remote controllers

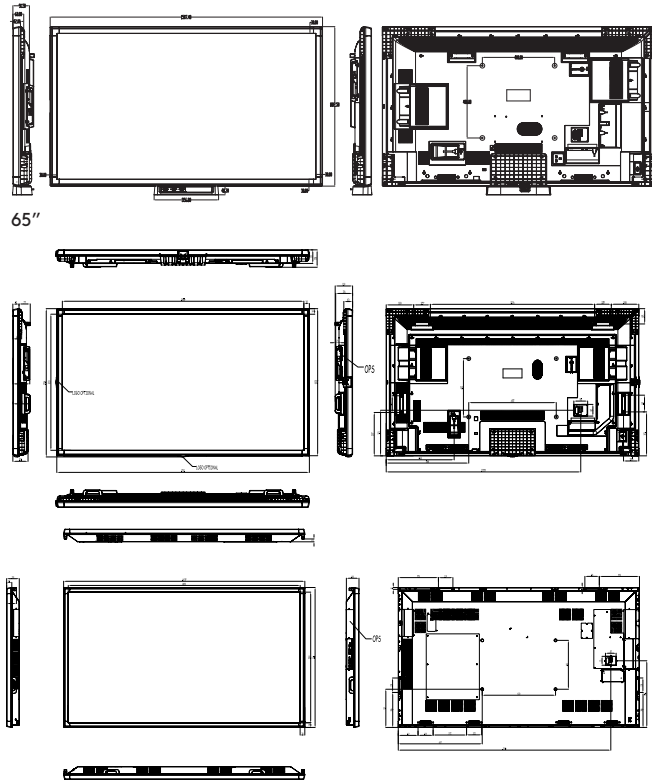


Remote controller

Connectivity



Dual OS Interactive Flat Panel Displays



| | IFD65T642/A3 | IFD75T643/A3 | IFD86T1640B/A3 |
|-----------------------------|-------------------------------|-------------------------------|-------------------------------|
| Panel | | | |
| Mainboard Model | System-On-Chip Model: MB150VS | System-On-Chip Model: MB150VS | System-On-Chip Model: MB150VS |
| H-Freq | 67.5 KHz | 135 KHz | 67.5 KHz |
| Max. Pixel Freq. | 74.25 MHz | 78 MHz | 280 kHz |
| V-Freq | 60 Hz | 60 Hz | 120 Hz |
| Size | 65" | 75" | 86" |
| Backlight Type | DLED | DLED | ELED |
| Panel Technology | IPS | IPS | IPS |
| Panel Type | 16/7 Panel | 16/7 Panel | 16/7 Panel |
| Front Type | Ultra Narrow Bezel | Touch Bezel Type | Black Touch Bezel Type |
| Orientation | Horizontal | Horizontal | Horizontal |
| Resolution | 3840 x 2160 (16:9) - UHD | 3840 x 2160 (16:9) - UHD | 3840 x 2160 (16:9) - UHD |
| Active Area | 1429 mm (H) x 804 mm (V) | 1650 (H) x 928 (V) | 1907 (H) x 1076 (V) |
| Brightness (Typ.) | 400 cd/m2 | 350 cd/m2 | 500 cd/m2 |
| Contrast Ratio (Typ.) | 1200:1 | 1200:1 | 1200:1 |
| Panel life time (Min./Typ.) | 30000/50000 Hr | 30000 Hr | 50000 Hr |
| Viewing Angle | 178° | 178° | 178° |
| Response Time | 9 ms | 9 ms | 8 ms |
| Color Value | 8 Bit, 16.7 M Colors | 8 Bit, 16.7 M Colors | 10 Bit, 1.07Billion colors |
| Areas of Usage | Indoor | Indoor | Indoor |
| Inputs | | | |
| HDMI | 1 | 1 | 1 |
| HDMI Support Type | 2.0 | 2.0 | 2.0 |
| Display Port Type | 1.2a | 1.2a | 1.2a |
| DVI | Optional | Optional | Optional |
| Analogue D-SUB | Yes | Yes | Yes |
| USB 2.0 | 1 + 1 for Android | 1 + 1 for Android | 1 + 1 for Android |
| USB 3.0 | 1 | 1 | 1 |
| Internal USB 2.0 | Yes (W/Screw Lock) | Yes (W/Screw Lock) | Yes (W/Screw Lock) |
| USB Support Type | Photo/Video/MP3 | Photo/Video/MP3 | Photo/Video/MP3 |
| RS232 | DSUB9 | DSUB9 | DSUB9 |
| RJ12 | Service use only | Service use only | Service use only |
| LAN (Control) | 1 + 1 for Android | 1 + 1 for Android | 1 + 1 for Android |
| Remote Extender | Yes | Yes | Yes |
| Line In | Yes | Yes | Yes |
| YPbPr | No | No | No |
| Micro SD | Yes | Yes | Yes |
| Outputs | | | |
| HDMI | Yes | Yes | Yes |
| DisplayPort | Yes | Yes | Yes |
| DVI | No | No | No |
| Speakers | Yes | Yes | Yes |
| Speaker output | 2x8W | 2x8W | 2x8W |
| Lineout | N/A | Yes | N/A |

IFD65T642/A3

IFD75T643/A3

IFD86T1640B/A3

| | IFD65T642/A3 | IFD75T643/A3 | IFD86T1640B/A3 |
|--------------------------------------|---|--|--|
| Mechanical Features | | | |
| Size | 1507mm (L) x 882mm (H) x 120mm (D) | 1731mm (L) x 1008mm (H) x 119mm (D) | 1975mm (L) x 1146mm (H) x 103mm (D) |
| Shipping Size | 1670mm (L) x 1073mm (H) x 266mm (D) | 1948mm (L) x 1248mm (H) x 310mm (D) | 2163mm (L) x 1405mm (H) x 318mm (D) |
| Weight | 51.5 KG | 80 KG | - |
| Shipping Weight | 59 KG | 90 KG | - |
| Vesa Mounting Size | 400 mm(H)x 400 mm(V) M6 | 600 mm(H)x 400 mm(V) M6 | 600 mm(H)x 400 mm(V) M6 |
| Bezel Width (Bottom-Side-Top) | 38 mm/38 mm/38 mm | 38 mm/38 mm/38 mm | 38 mm/38 mm/38 mm |
| Working Conditions | | | |
| Temperature Conditions | +40°C/0°C | +40°C/0°C | +40°C/0°C |
| Humidity | 90% | 90% | 90% |
| General Features | | | |
| Main Features | Open Content Management Support, Scheduler, USB-AutoPlay, Auto-Launch, HDMI-CEC, HDMI-Hotplug, Auto-switch on Failover, Panel Lock | Open Content Management Support, Scheduler, USB-AutoPlay, Auto-Launch, HDMI-CEC, HDMI-Hotplug, Auto-switch on Failover, Panel Lock, OSD Rotation, NoSignalPowerOff, Screen Saver, Pixel shift, Scheduler, Videowall support, remote control via LAN, Real Time Clock | Open Content Management Support, Scheduler, USB-AutoPlay, Auto-Launch, HDMI-CEC, HDMI-Hotplug, Auto-switch on Failover, Panel Lock, OSD Rotation, NoSignalPowerOff, Screen Saver, Pixel shift, Scheduler, Videowall support, remote control via LAN, Real Time Clock |
| Mechanical Features | IR Touch, Joystick, IR Extender Support, Rocker Switch, Detachable power cable, Carrying slots, Detachable logo positioning, Internal usb cover, Cable Holder | Joystick, IR Extender Support, Rocker Switch, Detachable power cable, Carrying slots, Detachable logo positioning, Internal usb cover, Cable Holder | Joystick, IR Extender Support, Rocker Switch, Detachable power cable, Carrying slots, Detachable logo positioning, Internal usb cover, Cable Holder |
| Optional Features | OPS Compliance | OPS Compliance | OPS Compliance |
| Speaker | 2 x 8 W | 2 x 10 W | 2 x 10 W |
| Power | | | |
| Power Supply | 110 VAC - 240 VAC | 110 VAC - 240 VAC | 110 VAC - 240 VAC |
| Power Consumption(Off) | ≤0.5W | ≤0.5W | ≤0.5W |
| Power Consumption (Active-StandBy) | 14 W | - | - |
| Power Consumption(On) | 74 W | - | - |
| Accessory | | | |
| Standard | QSG, Warranty Card, IB, Power Cord, Remote Control, RC Battery, Mounting Kit, Extension Brackets, IR Extender Cable | QSG, Warranty Card, IB, Power Cord, Remote Control Unit, RC Battery, Mounting Kit, Extension Brackets, IR Extender Cable | QSG, Warranty Card, IB, Power Cord, Remote Control Unit, RC Battery, Mounting Kit, Extension Brackets, IR Extender Cable |
| Certification | | | |
| Safety Approval | ✓ | ✓ | ✓ |
| EMC Approval | ✓ | ✓ | ✓ |
| CE | ✓ | ✓ | ✓ |
| Reliability Approval | ✓ | ✓ | ✓ |
| Touch Screen (Overlay Design) | | | |
| Type of Touch | Infrared (IR) Technology | Infrared (IR) Technology | Infrared (IR) Technology |
| Supported Point | 10 Points | 10 Points | 10 Points |
| Sensitivity | Any touch with finger, gloved hand or pointer | Any touch with finger, gloved hand or pointer | Any touch with finger, gloved hand or pointer |
| Connectivity | HID, TUIO, Flash | HID, TUIO, Flash | HID, TUIO, Flash |
| Supported OS and applications | Windows®7, Windows®8, Windows®10, Vista, XP, Mac® OS, Linux, Android | Windows®7, Windows®8, Windows®10, Vista, XP, Mac® OS, Linux, Android | Windows®7, Windows®8, Windows®10, Vista, XP, Mac® OS, Linux, Android |
| Orientation | Portrait and landscape support | Portrait and landscape support | Portrait and landscape support |
| Calibration | No need | No need | No need |
| Accuracy | %90 < | %90 < | %90 < |
| Reporting Rate | Up to 450 fps | Up to 450 fps | Up to 450 fps |
| Glass type | Anti Glared (AG), Tempered | Anti Glared (AG), Tempered 4mm | Anti Glared (AG), Tempered 4mm |
| Frame rate | up to 450 fps | up to 450 fps | up to 450 fps |
| Communication | USB 2.0 | USB 2.0 | USB 2.0 |
| Power supply Mode | USB | USB | USB |
| Supply voltage | DC 5V +/- 5% | DC 5V +/- 5% | DC 5V +/- 5% |
| Average current | <400mA | <400mA | <400mA |
| Response time | <10ms | <10ms | <10ms |
| Touch Accuracy | +/-2mm (over 90% area) | +/-2mm (over 90% area) | +/-2mm (over 90% area) |
| Object sizes for touch | 5mm | 5mm | 5mm |
| Touch Durability | Unlimited | Unlimited | Unlimited |
| HID compatibility | Yes USB | Yes USB | Yes USB |



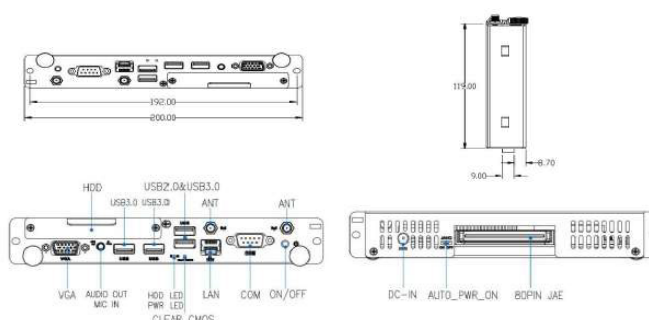


VESTEL

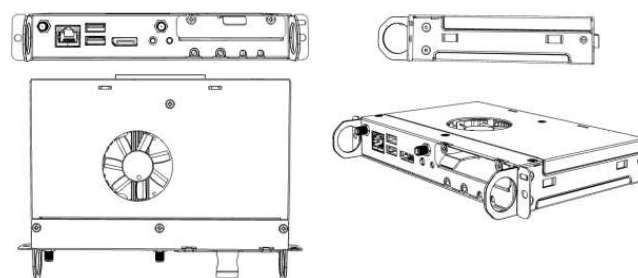
Plugin OPS Module

Vestel's pluggable processors (OPS) are designed to give extra computational power to our displays.

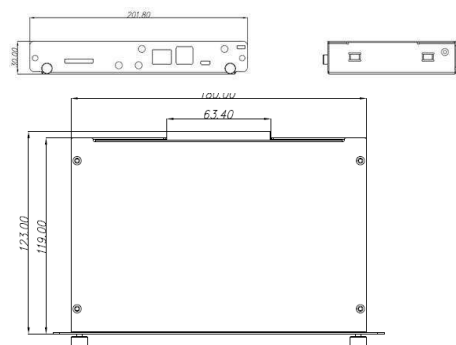
| Model Name | OPSSL650 | OPSSL651 | OPSJ1900 | OPSRK150 |
|--------------------|---|---|---|--|
| CPU | Intel® Core™ i5-6200U, Skylake-U SoC | Intel® Core™ i5-6300U, Skylake-U SoC | Intel® Celeron® J1900 | RockChip RK3188 |
| Chipset | N/A | N/A | N/A | N/A |
| Resolution Support | Ultra HD, Max. 4096 x 2304 @24Hz | Ultra HD, Max. 4096 x 2304 @24Hz | Full HD Max.2560x1440 @60Hz | Full HD Max.2560x1440 @60Hz |
| GPU | Intel® HD Graphics 520 | Intel® HD Graphics 520 | Intel® HD Graphics | MALI- 400 MP GPU up to 600 Mhz |
| Memory | 2 x SO-DIMM DDR3L, Up to 16GB 4 GB (Base Model) | 2 x SO-DIMM DDR3L, Up to 16GB 4 GB (Base Model) | 2 x SO-DIMM DDR3L, Up to 8GB 4 GB (Base Model) | 2 GB DDR3 |
| Network | LAN: 10/100 Mbps, WLAN: 802.11 a/g/n, Bluetooth 4.0, 4G (optional) | LAN: 10/100 Mbps, WLAN: 802.11 a/g/n, Bluetooth 4.0, 4G (optional) | LAN: 10/100 Mbps, WLAN: 802.11 a/g/n, Bluetooth 4.0 | LAN: 10/100 Mbps, WLAN: 802.11 a/g/n, Bluetooth 4.0 |
| Storage | SSD 256 GB, HDD 500 GB 500 GB (Base Model) | SSD 256 GB, HDD 500 GB 500 GB (Base Model) | SSD 256 GB, HDD 500 GB 500 GB (Base Model) | Internal Storage: 8 GB (Base Model) Nand Flash, SD Card : Up to 32 GB |
| I/O Ports | 1 x RS232 3 x USB3.0 1 x USB2.0 1 x VGA 1 x Headphone 3.5 mm jack 1 x Microphone 3.5 mm jack 2 x WiFi antenna connector | 1 x RS232 3 x USB3.0 1 x USB2.0 1 x VGA 1 x Headphone 3.5 mm jack 1 x Microphone 3.5 mm jack 2 x WiFi antenna connector | 1 x RJ45 2 x USB2.0 1 x Display Port 1 x Headphone 3.5 mm jack 1 x Microphone 3.5 mm jack 2 x WiFi antenna connector 1 x Power button 1 x Reset button | 1 x RJ45 2 x USB2.0 1 x USB OTG 1 x Headphone 3.5 mm jack 1 x Microphone 3.5 mm jack 1 x WiFi antenna connector 1 x SD Card Slot |
| Operating System | Windows 10 | Windows 10 | Windows 10 | Android 4.4 Kitkat |
| Available Series | STM, PDM, PDH, PDU, UHM, UHH, IFM, IFC, IFD | STM, PDM, PDH, PDU, UHM, UHH, IFM, IFC, IFD | STM, PDM, PDH, PDU, UHM, UHH, IFM, IFC, IFD | STM, PDM, PDH, PDU, UHM, UHH, IFM, IFC, IFD |



OPSSL650/51



OPSJ1900

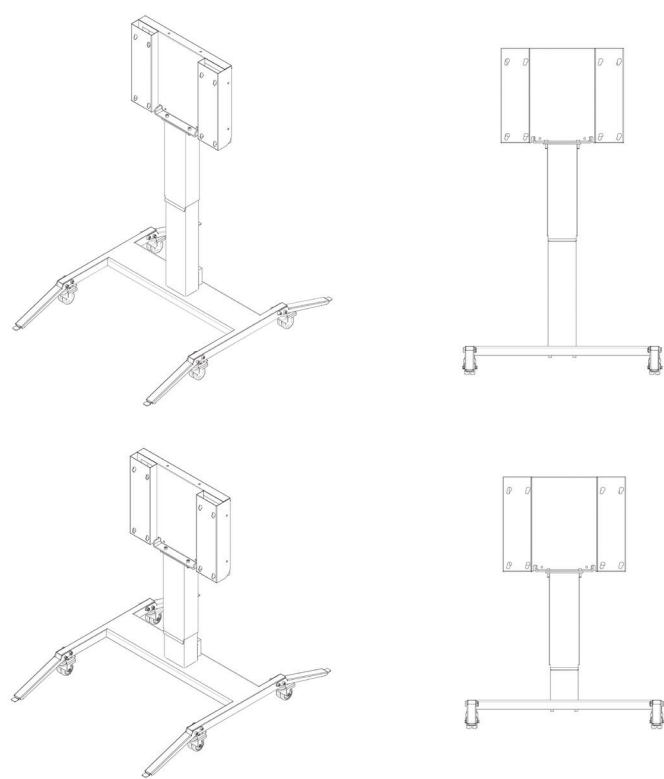


OPSRK150

VESTEL
Motorized
Stand

You will be able to make use of our adjustable motorized stands together with our IFPD products.

| | |
|------------------------|--|
| | STDMS30 |
| General | |
| Colour | Black |
| Orientation | Landscape |
| Compatible Products | 55", 65", 75", 84"/86" |
| Mobility | 4 wheels |
| Electrical | |
| Input Voltage | 100-240V AC |
| Input Frequency | 50-60Hz |
| Input Current | 2.5A |
| Output Voltage | 24V DC |
| Output Current | 6.67A |
| Mechanical | |
| Max. Height | 1735 mm |
| Min. Height | 1345 mm |
| Mounting Compatibility | 600mm x 400mm VESA, 400mm x 400mm VESA |
| Package Size | - |
| Weight | 91 kg |
| Package Weight | - |





NOTES

Vestel Trade Co.

Organize Sanayi Bölgesi, 45030 Manisa/Türkiye

Phone: 90 - 236 233 25 82

Fax: 90 - 236 233 25 84

vesteltrade@vestel.com.tr

www.vestel.com.tr

Vestel Benelux B.V.

Stationsplein 45,

Groothandelsgebouw A194,

3013 AK Rotterdam,

The Netherlands

Phone: 31 - 10 235 1000

info@vestelbenelux.nl

www.vestelbenelux.nl

TOO Vestel Central Asia

050026 Kazakhsatan/Almaty Aiteke bi 187, office:215

Phone: 7 - 727 263 39 39

Vestel CIS Ltd.

1-st Graivoronovsky Proezd, No.20 Building 16, 109518,

Moscow /Russia

Phone: 7 - 095 956 8230

Fax: 7 - 095 956 8233

info@vestel.ru

www.vestel.ru

Vestel Electronica

Str Zidarului nr 9-11, Sector 5 Bucuresti, ZIP 051765

Bucharest/Romania

Phone: 40 - 31 425 42 93

Fax: 40 -31 425 42 95

office@vestel.ro

www.vestel.ro

Vestel France S.A.

17 Rue de la Couture-Silic BP 10190-94563 RUNGIS

Cedex/France

Phone: 33 - 1 46 75 00 29

Fax: 33 - 1 41 80 99 31

p.benhamou@vestel-france.fr

Vestel Germany GmbH

Parkring 6 D-85748 Garching bei München/Germany

Phone: 49 - 89 55295 - 0

Fax: 49 - 89 55295 - 2000

info@vestel-germany.de

www.vestel-germany.de

Gruppo Industriale Vesit SPA

Società Unipersonale Via Polidoro da Caravaggio,

6 20156 - Milano/Italy

Phone: 39 - 02 842 48577

Fax: 39 - 02 842 48617

info@givesit.it

www.givesit.it

Vestfrost Household

Fiskebrogade 5 6700 Esbjerg

Phone: +45-76104045

salgsb@vestfrost.dk

www.vestfrost.dk

Vestel Iberia, S. L.

Paeso Doce Estrellas, 2, 3°. 28042. Madrid, Spain

Phone: 34 - 91 320 63 98

Fax: 34 - 91 320 52 58

vestel@vestel.es www.vestel.es

Vestel Poland

Poleczki 33, 02-822 Warszawa, Mazowieckie

Phone: 48 22 2555700

info@vestel-poland.com

Vestel Scandinavia

Bat, Power Oy, Huuretie 9, 33470 YLÖJÄRVI, Finland

Phone: 358 - 50 - 5681058

fin@batpower.fi

www.finlux.fi

Vestel UK Ltd

Vestel House, Waterside Drive

Langley, Berkshire SL3 6EZ

Phone: 44 - 3330 146 400

info@vestel-uk.com

www.vestel.co.uk

United Technical Services

S.R.O. ul. Seneckâ 16, 91101 Samorin, Slovakia

Phone: 421- 31 590 27 31

Fax: 421- 31 590 27 38

info@uts.sk

www.uts.sk

VESTEL

Organize Sanayi Bölgesi, 45030 Manisa/Türkiye

Phone: 90 - 236 233 25 82 **Fax:** 90 - 236 233 25 84

vesteltrade@vestel.com.tr

www.vestelinternational.com . www.vestelvisualsolutions.com